

Meeting the Needs of Young Children in Child Welfare

Sheri L. Hill, PhD
Early Childhood Policy Specialist

hill@earlychildhoodpolicy.com
www.earlychildhoodpolicy.com
 Cell: 206.940.0892

Photo Credit Slide ©

- Dr. Hill would like to thank all the friends and families who have provided countless photos for her to use in presentations.
- All photos are copyrighted © to Dr. Hill, unless un-marked, and further reproduction is not allowed.

Slide 2

Why Early Childhood?

What do the numbers tell us?

PP Handout at:
www.earlychildhoodpolicy.com/courttrain.html

Slide 3

Washington Baby Facts



- 1 in 4 maltreated children are under the age of 3
- Dependency Filings (2012)
 - 61% < 6 years old
 - 25% < 1 year old
 - Orme, et. al. (2013)

www.zerotothree.org/public-policy/state-community-policy/infant-and-toddler-state-fact-sheets.html
www.zerotothree.org/nationalbabyfacts

Slide 4

Entries Into Out of Home Care

- Washington Children Under 5 (0-4)
 - 2012 – 50% www.partnersforourchildren.org/child-well-being
 - 2011 – 49%
- King County
 - 2012 – 52% Look up state and county data on the Partners for Our Children Data Portal
 - 2011 – 50%
- July 1, 2013 – Children in Care
 - 53% < 5 years old

Slide 5

Disrupted Behaviors, Bodies and Brains

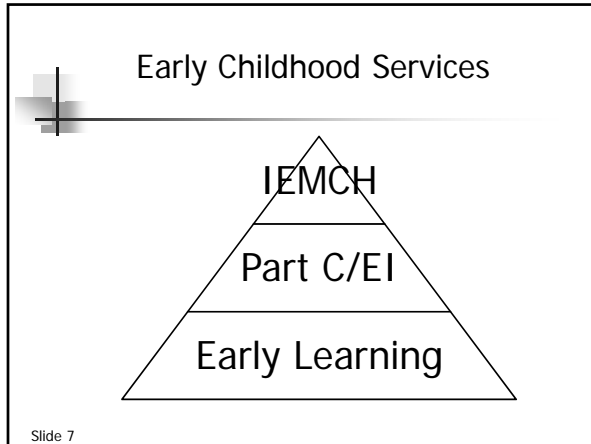
Children on Medicaid (2010) ©

Children birth to five in foster care have a much higher prevalence of developmental, attentional, behavioral and adjustment disorders



CMHS & CSAT 2013

Slide 6




Infant and Early Childhood Mental Health and Psychotherapy

Slide 8

What is Infant and Early Childhood Mental Health?

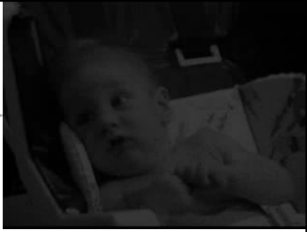
- Key Capacities
 - Experience, regulate and express emotions
 - Form close and secure interpersonal relationships
 - Explore the environment and learn
- Health & Well-Being
 - Synonymous with healthy social-emotional development.



www.zerotothree.org

Slide 9

Babies Can Suffer & Need Treatment



- Traumatic Stress Responses (PTSD) and Depression
 - Identified in Babies 4-6 months old
- ZERO TO THREE: National Center for Infants, Toddlers, and Families. (2005) Diagnostic Classification of Mental Health and Development Disorders of Infancy and Early Childhood, Revised (DC:0-3R)

Slide 10

Administration for Children, Youth, and Families 4/17/12 Memo

“ACYF is organizing many of its activities around the promotions of meaningful and measurable changes in social and emotional well-being for children who have experienced maltreatment, trauma, and/or exposure to violence.”

www.acf.hhs.gov/programs/cb/resource/im1204

Slide 11

An Evidence Based Treatment: Child Parent Psychotherapy (CPP)



- Attachment, Psychoanalytic and Trauma Theories
- Cognitive-Behavioral and Social Learning Therapies
- Attention to Family Cultural Values

Lieberman & Van Horn (2008)

Slide 12



CPP
May Include

- providing information
- caregiver coaching
- play therapy
- cognitive-behavioral therapy
- psychodynamic interpretation
- provide a corrective attachment experience
- trauma work
- practical assistance and support

Wraparound Foster Care in Illinois

- Greater Improvement than SOC Alone
 - Traumatic stress symptoms
 - Strengths
 - Life Domain Functioning
 - Behavioral Emotional Needs
 - Risk Behaviors
 - Reduced Placement Disruptions
- Effective Across Race/Ethnic Subgroups
 - Lyons, J (2008) & Weiner et al (2009)

Slide 14


Part C Early Intervention (EI) Services
AKA
Birth to Three

Slide 15

Keep a Watch Out!

Remember

Trauma and Toxic Stress
May Lead to Delays



Slide 16

Children 1-5 Reported for Maltreatment

- Below Peers Developmentally
 - social-emotional
 - cognitive
 - language
 - daily living skills
 - behavioral
 - and social-skill-based
- 42.3% potentially eligible for services under IDEA

NSCAW II Wave 2 Report: Child Well-Being (July 2012)

Slide 17

Child Welfare Involved Infants & Toddlers

- Approximately half (35-68%) have developmental delays or disabilities.
 - Casanueva, et al (2012)
 - Graham, M. A. (2011)
 - Leslie et al. (2005)
- Referrals screened with no services = Risk
- Children receiving in-home services = Risk
- Children in out-of-home care
 - Stahmer et al (2005)
 - Barth et al (2007)
 - Wulczyn et al (2011)

Slide 18

Individuals with Disabilities Education Act (IDEA) Part C

Provides individualized early intervention services to families with children birth to three who have developmental delays or disabilities.

- Individualized Family Service Plans (IFSP) 0-3
- Individualized Education Plans (IEP) 3-21



©
Slide 19


Developmental Domains Assessed In Part C

- Cognitive - ability to learn/how a child learns
- Physical - ability to move, see and hear
- Communication - ability to understand language and express needs
- Social/emotional - ability to relate with others
- Adaptive skills - ability to dress, eat and take care of themselves

Slide 20

Laws Line Up

- Individuals with Disabilities Education Act (IDEA)
 - 2004
 - 2011 Regs




- Child Abuse Prevention and Treatment Act (CAPTA)
 - 2003
 - 2010

©
Slide 21

Still Not Getting Services

In Child Welfare ...

Less than half of likely qualified infants and toddlers have a Part C Individualized Family Service Plan (IFSP).




Casaneuva, Urato, Fraser, Lederman, & Katz (2010)
In Graham, M.A. (2011)

©
Slide 22

Referrals to Part C in WA

Child Protection Services or Child Welfare Services

- Statewide ~4% (FY12-13)
- King County
 - 1.85% 2012
 - 3.52% 2013
 - 4th Quarter – 4.96%



©
KC is Looking Up!

Thanks to Kathy Blodgett, ESIT and Magan Cromar and Wendy Harris, KC DDD for this data.

Part C in Washington

Early Support for Infants and Toddlers
Family Health Hotline
1-800-322-2588
www.del.wa.gov/esit



Please Ask Video
www.youtube.com/watch?v=JoaFNGmSU5U
Guiding Concepts Video
www.youtube.com/watch?v=vGqAOZrvOQU&feature=youtu.be

©
Slide 24

Early Learning

Home Visiting
Licensed Child Care
Center-Based Early Learning Programs


Evidenced Based Home Visiting Programs

Support Development and Reduce Child Abuse and Neglect

- Department of Early Learning
 - www.del.wa.gov/development/visiting/
- Thrive by Five Washington
 - <http://thrivebyfivewa.org/home-visiting/>
- Fight Crime Invest in Kids, Washington
 - www.fightcrime.org/state/washington

Slide 26

Quality Child Care Keeps Development Moving Forward



Particularly for at-risk children

www.zerotothree.org/public-policy/policy-toolkit/child_caremar5singles.pdf

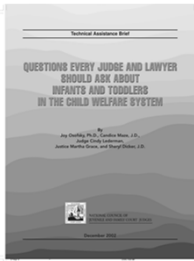
High Quality Center Based Programs are Underutilized

- Foster Care = Auto Eligible for Head Start and Early Head Start
 - 9.2% of children under 5 in care nationally (2008)
 - www.acf.hhs.gov/sites/default/files/cb/im1101.pdf
- Washington State – Children in Foster Care
 - 3% of all the slots in Early Head Start, Head Start and Early Childhood Education Assistance Program (ECEAP)
 - U.S. Department of Health & Human Services, Administration for Children & Families, Office of Head Start, Head Start Enterprise System, Program Information Report
 - www.del.wa.gov/publications/partnerships/docs/ECEAP_HS_Profile_2012.pdf

Slide 28

Helping Courts Ask:

- *Questions Every Judge and Lawyer Should Ask About Infants and Toddlers In the Child Welfare System*
 - National Council of Juvenile and Family Court Judges



http://throughtheeyes.org:8080/files/2012_ncs_materials/E1_handout1.pdf

References

- Barth, R.P., Lloyd, E.C., Casanueva, C., Scarborough, A.A., Losby, J.L., & Mann, T. (2007). Developmental Status and Early Intervention Service Needs of Maltreated Children. Washington, DC: U.S. Dept of Health and Human Services, Office of the Assistant Secretary for Planning and Eval.
- Casanueva, C., Dozier, M., Tueller, S., Jones Harden, B., Dolan, M., & Smith, K. (2012). Instability and early life changes among children in the Child Welfare System. OPRE Report #2012-44, Washington, DC: Office of Planning, Research and Evaluation, Administration for Children and Families, U.S. Department of Health and Human Services.
- Graham, M. A. (2011). Opportunities in Florida's Child Welfare System to Address the Developmental Needs of Infants and Toddlers. Zero to Three Journal, vol. 31, no. 3, p.60.
- Lyons, J. (2008). Evidence-based trauma interventions for foster children in Illinois. Presentation to funders and stakeholders, Chicago, IL.
- Leslie et al. (2005) The Physical, Developmental, and Mental Health Needs of Young Children in Child Welfare by Initial Placement Type. The Journal of Developmental and Behavioral Pediatrics, 26: 3, pp. 177-185.
- Orme, M., Skreen, J., O'Donnell, K., McCutley, C., Wang, W., and George, T. (2013). Dependent Children in Washington State: Case Timeliness and Outcomes, 2012 Annual Report. Olympia, WA: Center for Court Research, Administrative Office of the Courts. Retrieved from <http://www.courts.wa.gov/wscsr/docs/DTR2012.pdf>, 1/24/14.
- Stahmer, A. C., Laurel, L. K., Huriburt, M., Barth, R. P., Webb, M. B., Landsverk, J., & Zhang, J. (2005). Developmental and Behavior Needs and Service Use for Young Children in Child Welfare. Pediatrics, 116, 891-900. Retrieved from <http://pediatrics.appublications.org/content/116/4/891>, January 2014.
- Weiner, D.A., Schneider, A., & Lyons, J.S. (2009). Evidence-based treatments for trauma among culturally diverse foster care youth : Treatment retention and outcomes. Children and Youth Services Review, 31, 1199-1205.
- Walczyn, F., Ernst, M., & Fisher, P. (2011). Who Are Infants in Out-of-Home Care? An Epidemiological and Developmental Snapshot. Chicago: Chapin Hall at the University of Chicago. Retrieved from www.chapinhall.org/research/brief/who-are-infants-out-home-care . January 18, 2014.